

RECEIVED  
LARAMIE COUNTY  
CLERK OF COURTS  
CHEYENNE, WY.

'87 SEP 2 AM 11 33

CERTIFIED LAND CORNER RECORDATION

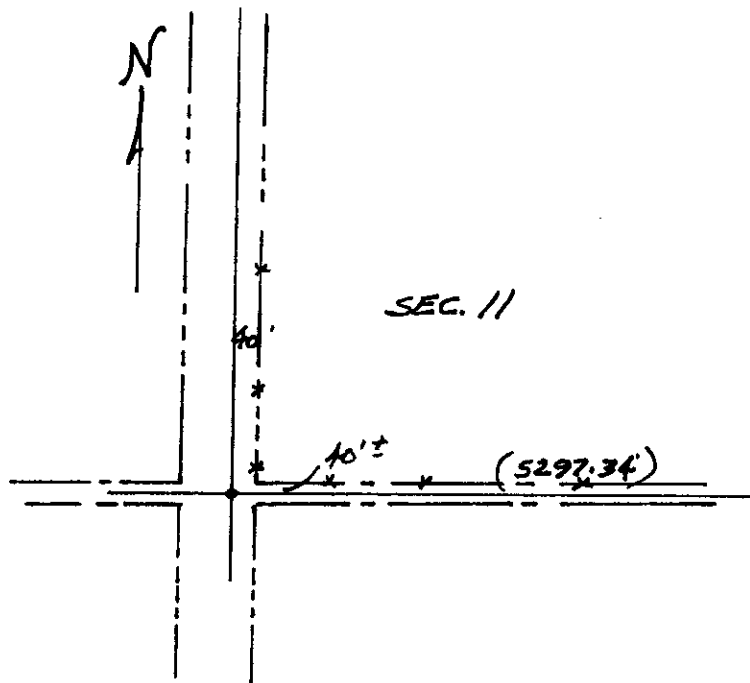
DESCRIPTION OF CORNER EVIDENCE FOUND, AND ORIGINAL RECORD (if known)

FOUND 1" Steel Bar  
SW CORNER SECTION 11,  
T. 13 N., R. 64 W.  
6<sup>th</sup> P.M.

DESCRIPTION OF MONUMENT AND ACCESSORIES ESTABLISHED  
TO PERPETUATE THE ORIGINAL LOCATION OF THIS CORNER:

CORNER IS NEAR INTERSECTION OF  
COUNTY ROAD RAD-3(1) & COUNTY ROAD 207

SKETCH, WITH COURSE AND DISTANCE TO ADJACENT CORNER IF DETERMINED IN THIS SURVEY.  
(May Sketch or Paste Reproduction on Reverse Side.)



I, D. M. Hopkins certify that I have carefully performed or reviewed the work done on the diagrammed corner as reported on this recordation form and approve the same.

Ronald M. Hopkins  
Signature of Surveyor

558  
Registration No.

STATE OF WYOMING,  
Office of Clerk and Recorder,  
County of Laramie

This "corner record" was filed for record on the 2 day of September, 1987, was noted on the cross-index plat and is assigned page No. \_\_\_\_\_, in book No. \_\_\_\_\_.

Janet C. Whitcomb  
County Official

Cross Index No.	<u>J-17</u>	T. <u>13</u>	R. <u>64</u>	Mer.
		T. _____	R. _____	Mer.
		T. _____	R. _____	Mer.
		T. _____	R. _____	Mer.
		T. _____	R. _____	Mer.
		T. _____	R. _____	Mer.
		T. _____	R. _____	Mer.